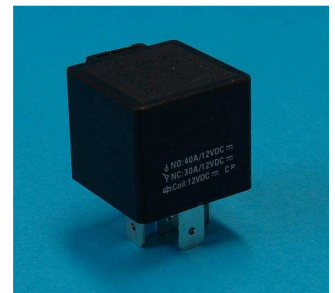


# Automotive-Relay SGR A01 ...

## 1 pole 40A / 2 pole 2x20A

# ELESTA



### Technical Data

Contact Data	
Type of Contact	Single Contact
No. of Contacts	1C / 1A / 2A
Rated Current	A 40
Contact Material	AgSnO

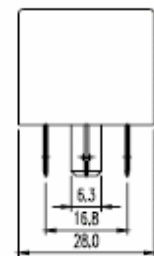
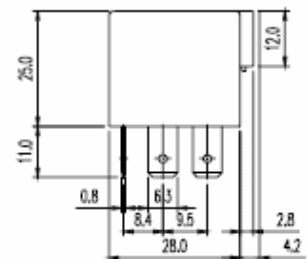
General Data		
Mechanical Life	> Operations	$10^7$
Electrical Life at Rated Voltage	> Operations	$10^5$
Max. Switching Frequency	Operations / h	1800
Operate Time / Release Time	approx. in ms	10 / 10
Insulating Resistance	MOhm Min. /500VDC	100
Test Voltage Contact / Coil	$\geq$ VAC / 60s	500
Test Voltage Contact Poles	$\geq$ VAC / 60s	1000
Shock Resistance	1000m/s <sup>2</sup> 60s	
Ambient Temperature	°C	-30 ... +85
Weight	gr.	36,5

Coil at + 20°C		
Rated Voltage	VDC	12 ... 24
Power Consumption (DC - Coil)	approx. W	1,8
Max. Actuating Voltage	VDC	1,5 x U <sub>N</sub>

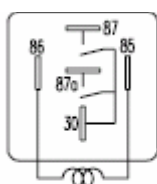
DC-Coil (1,8 W)				
U <sub>N</sub> (V)	R (Ohm)	U <sub>AN</sub> (V)	U <sub>AB</sub> (V)	I <sub>N</sub> (mA)
12	80 ± 10%	≤ 9	≥ 0,6	150
24	320 ± 10%	≤ 18	≥ 1,2	75

Other coil tensions on request

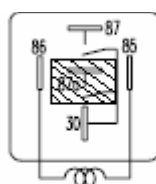
### Dimension Diagram



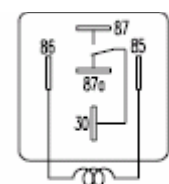
### Schematic Diagram (2 Normally Open Contact)



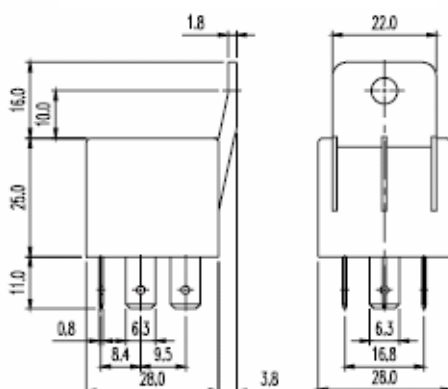
### Schematic Diagram (1 Normally Open Contact)



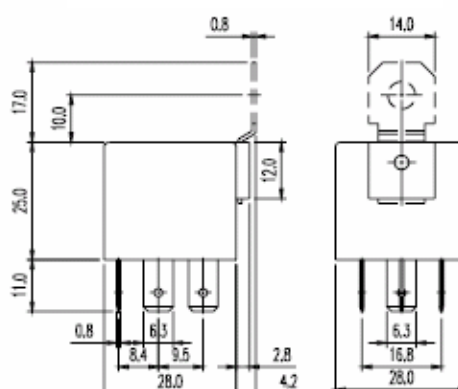
### Schematic Diagram (2 Change-Over Contact)



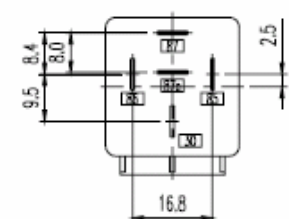
### Design P



### Design M



### Circuit Points Diagram



**Order Type**

