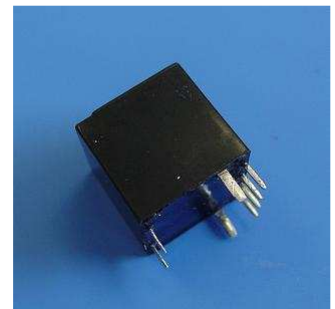


Automotive-Relay SGR A02 ...

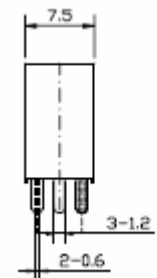
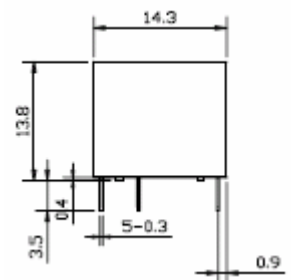
1 pole 30A

ELESTA

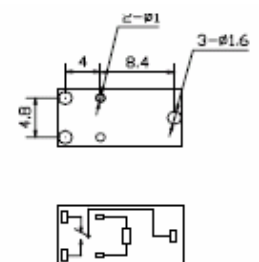


Dimension Diagram

Single Relay



Schematic Diagram



Technical Data

Contact Data	
Type of Contact	1C / 1A
No. of Contacts	1
Rated Current	A 30
Contact Material	AgSnO

General Data	
Mechanical Life	> Operations 10 ⁶
Electrical Life at Rated Voltage	> Operations 10 ⁵
Operate Time / Release Time	approx. in ms 10 / 5
Insulating Resistance	MΩ bei 500VDC 100
Test Voltage Contact	≥ VAC _{eff} 500
Shock Resistance	980m/s ² 11ms
Vibration Resistance	43,1m/s ² 10Hz - 500Hz
Ambient Temperature	°C -40...+ 85 / (-40...+ 105)
Weight	gr. 4,1 / 8,2

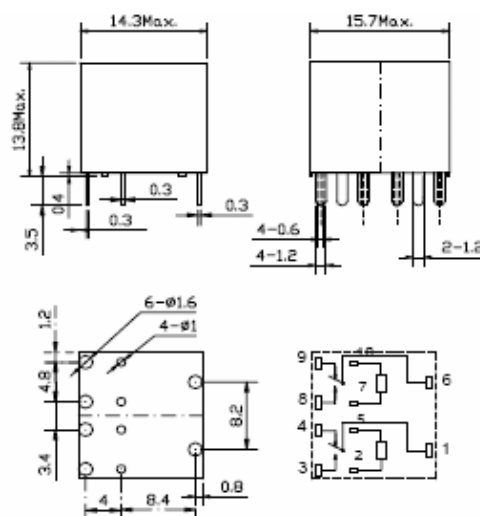
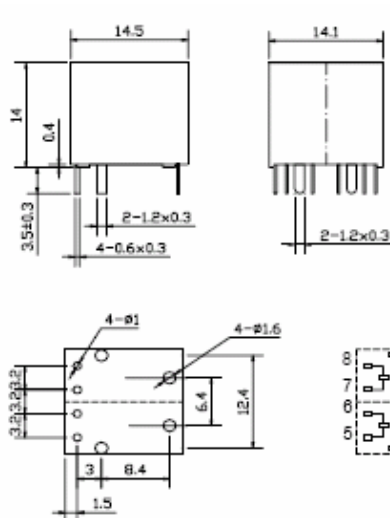
Coil at + 20°C	
Rated Voltage	VDC 12
Power Consumption (DC – Coil)	approx. W 0,8
Max. Actuating Voltage	VDC 16

DC-Coil (0,8 W)				
U _N (V)	R (Ohm)	U _{AN} (V)	U _{MAX} (V)	I _N (mA)
12	180 ± 10%	≤ 6,5	16	66,7

DC- Sensitive Coil (0,64 W)				
U _N (V)	R (Ohm)	U _{AN} (V)	U _{MAX} (V)	I _N (mA)
12	225 ± 10%	≤ 7,2	16	53,5

Twin Relay

Double Relay



Order Type

