

PCB-Relay SGR 01K

Miniature – PCB-Relay 1 pole 6A

ELESTA

Technical Data

Contact Data		
Type of Contact		Single Contact
No. of Contacts		1C / 1A / 1B
Rated Voltage / Max. Switching Voltage	VAC	250 / 380
Rated Current	A	5* / 6**
Rated Breaking Capacity (cos φ = 1)	VA	1500
Switching Load (Min.)	VDC / mA	5 / 100
Contact Material		AgNi*, AgNi + htv*, AgSnO**, AgCdO**

General Data		
Mechanical Life	> Operations	20 x 10 ⁶
Electrical Life at Rated Voltage	> Operations	1 x 10 ⁵
Max. Switching Frequency	Operations / h	360
Operate Time / Release Time	approx. in ms	6 / 4
Test Voltage Contact / Coil	≥ VAC _{eff}	4000
Test Voltage Contact Open	≥ VAC _{eff}	1000
Creeping-/Leakage Distance	mm	5,5 / 4,5
Insulation IEC 60664	- Rated Voltage (VAC)	250
	- Degree of Pollutin	3
	- Excess Voltage Category	III
Insulation Group / Rated Voltage (VDE 0110b 2/79)		C / 250
Ambient Temperature	°C	- 40...+ 85
Approvals		VDE, C-UL
Weight	gr.	5

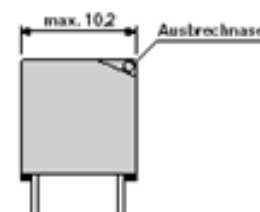
Coil at + 20°C		
Rated Voltage	VDC	3...48
Power Consumption (DC - Coil)	approx. W	0,2
Max. Actuating Voltage	VDC	2,2 x U _N

DC-Coil (0,4 W)				
U _N (V)	R (Ohm)	U _{AN} (V)	U _{AB} (V)	I _N (mA)
3	45 ± 10%	≤ 2,3	≥ 0,3	6
5	125 ± 10%	≤ 3,9	≥ 0,5	11
6	180 ± 10%	≤ 4,7	≥ 0,6	13
9	405 ± 10%	≤ 7,0	≥ 0,9	19
12	720 ± 10%	≤ 9,4	≥ 1,2	26
18	1620 ± 10%	≤ 14,0	≥ 1,8	39
24	2880 ± 10%	≤ 18,7	≥ 2,4	52
36	6480 ± 10%	≤ 28,1	≥ 3,6	78
48	11520 ± 10%	≤ 37,4	≥ 4,8	104

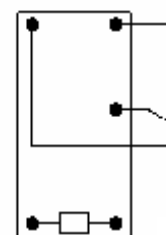
Other coil tensions on request.



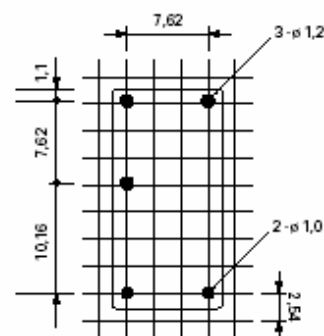
Dimension Diagram



Schematic Diagram

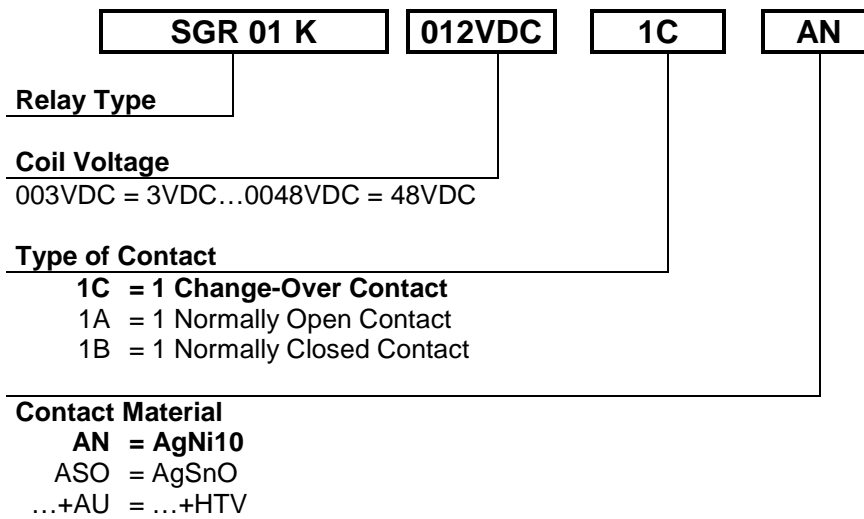


Top View



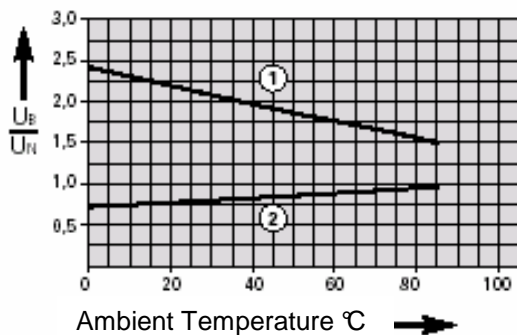
View on circuit points. All measure in mm.

Order Type



Electrical Specification

Excitation Voltage Range



- Single relay on PCB, no heat accumulation on PCB by self heating from other components.
- Continuous duty 100%

1) Max. excitation voltage without contact load

2) Min. excitation voltage (guaranteed values) without previous operation